



THE GRAND RESERVE AT MAITLAND PARK

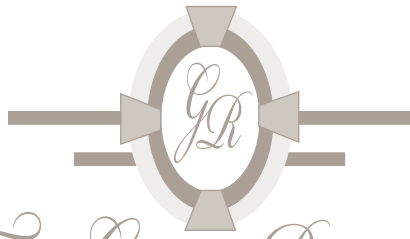
Welcome to the Grande Reserve at Maitland Park!

- *The Finest Apartment Home Community in Central Florida*
- *Exceptionally Designed 1, 2, 3 and 4 Bedroom Apartment Homes*
- *Spectacular Amenities, Lush Landscaping and Architectural Design*
- *Superb Location*

www.grandreserveatmaitland.com

The Grand Reserve at Maitland Park | 1939 Grand Isle Circle | Orlando, Florida 32810 | (407) 660-0663





THE GRAND RESERVE AT MAITLAND PARK

Welcome to *The Grand Reserve at Maitland Park*, the finest apartment home community in Central Florida. Located in Orlando's prestigious Maitland area, you will have a superb location with convenient access to all of Central Florida's major highways and conveniences you deserve.

The Grand Reserve at Maitland Park offers you a community with exceptionally designed 1, 2, 3 and 4 bedroom apartment homes. Our attention to detail and quality along with the commitment to excellence is evident in your new home's spectacular amenities, lush landscaping and architectural design.

In Your Community

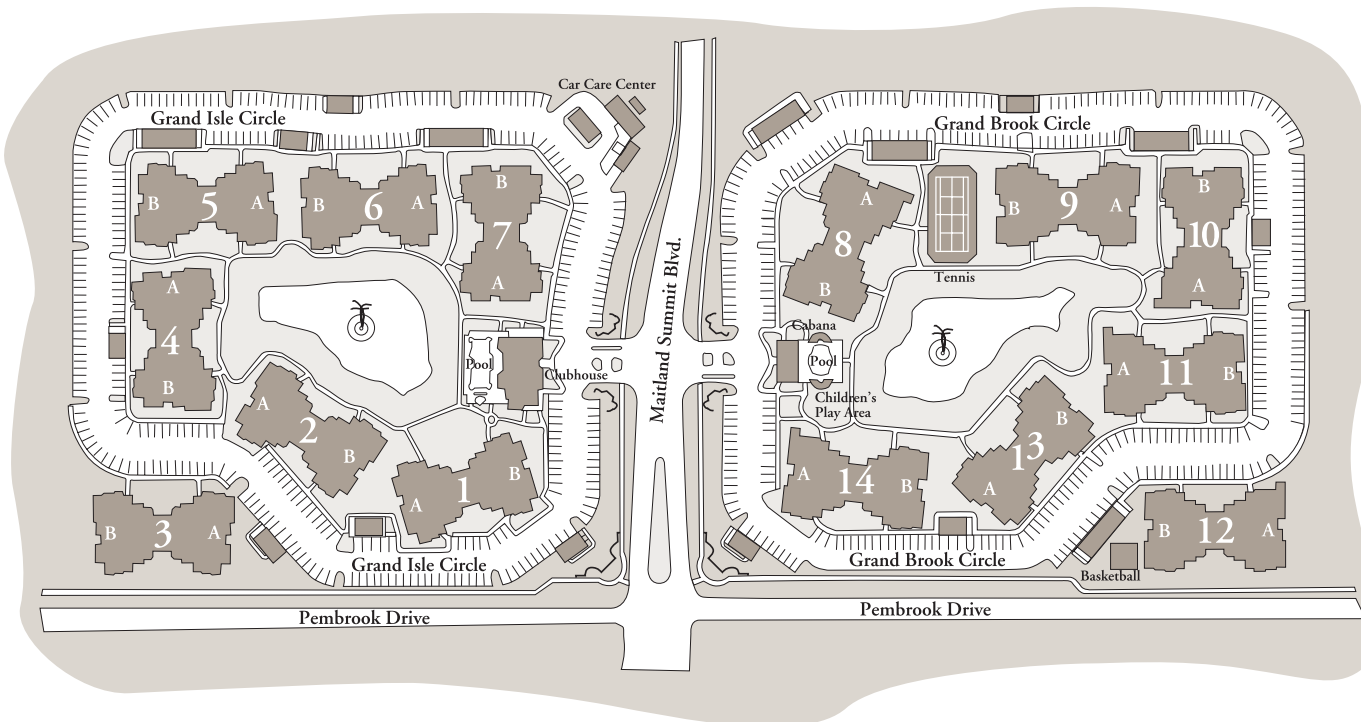
- ◆ Lush Grounds, Entries and Park Walk Areas
- ◆ Lake with Lighted Fountain
- ◆ Individual Garages with Storage, Automatic Door Openers
- ◆ Individual Storage Units
- ◆ The Clubhouse "Spectacular" Includes:
 - ◆ Sparkling Palatial Pool and Heated Spa with Tropically Landscaped Sundecks
 - ◆ State-of-the Art Health & Fitness Facility
 - ◆ Resident Club Room and Poolside Bar
 - ◆ Sound System with background Music for ALL Activity Areas
- ◆ Laundry Service Center
- ◆ Sports Facilities for tennis, Basketball
- ◆ Children's Playground
- ◆ Car Care Center
- ◆ Sheltered School Bus Stop

Your Health Spa

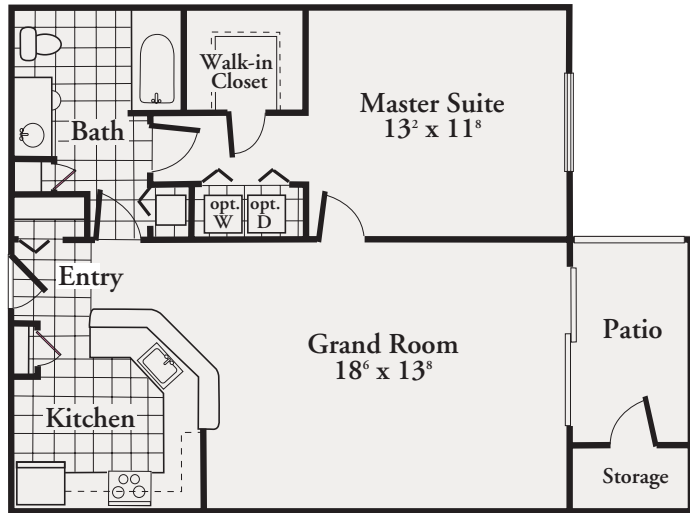
- ◆ State-of-the-Art Fitness Equipment
- ◆ Redwood Sauna
- ◆ Mirrored Walls, TVs, VCR and Sound System
- ◆ Aerobics Area
- ◆ Kid's Korner with TV, VCR and Games

In Your Home

- ◆ Decor Center to Personalize Your Home
- ◆ Spacious Open Floor Plans
- ◆ Bonus/Imagination Room
- ◆ Intrusion Alarm System with Bedside Activation
- ◆ Fire Protection System in Every Home
- ◆ Utility Room Storage Area
- ◆ Washer/Dryer Connections
- ◆ Washers and Energy Saving Gas Dryers Available
- ◆ Designer Kitchen with:
 - ◆ Microwave Oven
 - ◆ Frost Free Refrigerator with Ice Maker
 - ◆ Self-Cleaning Gas Range
 - ◆ Dishwasher
 - ◆ Pantry
 - ◆ Custom Crafted Wood & Mica Cabinets with Breakfast Bar
 - ◆ Appliances by Whirlpool
 - ◆ Garbage Disposal
- ◆ Vaulted Ceilings and Decorative Plant Shelves in Select Units
- ◆ Extended Vanity with Full Length Mirror & Make-up Area
- ◆ **Huge** Walk-in Closets
- ◆ Cable TV Outlets & Telephone Outlets- Where You Want Them EVERYWHERE
- ◆ Large True Divided Light Windows for Bright Interiors
- ◆ Wall Controlled Ceiling Fan
- ◆ Easy Care Showers & Tubs with Shampoo Shelves
- ◆ Beautiful Plush Carpeting over Sound Deadening, High-Density Rebond Pad
- ◆ Water Conserving Plumbing Fixtures
- ◆ Contemporary Vertical and Mini Blinds
- ◆ Dead Bolts and Viewers on Entry Doors

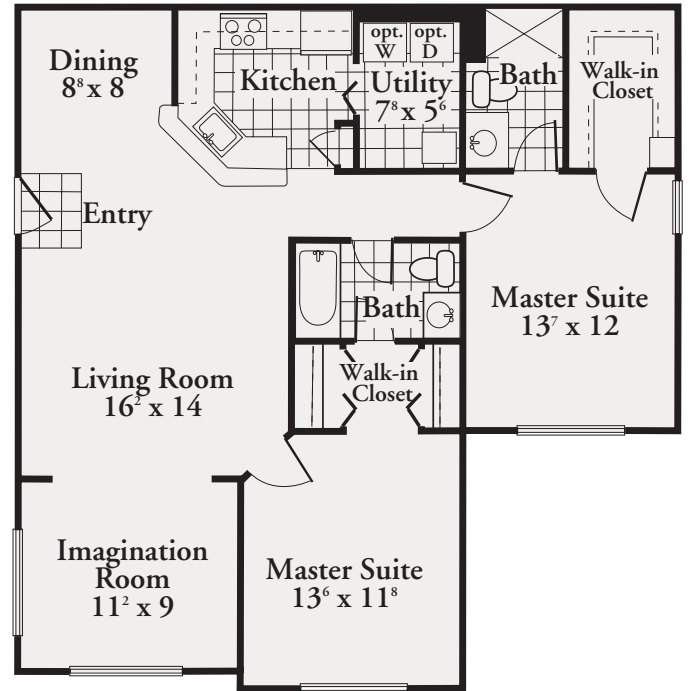


THE GRAND RESERVE AT MAITLAND PARK



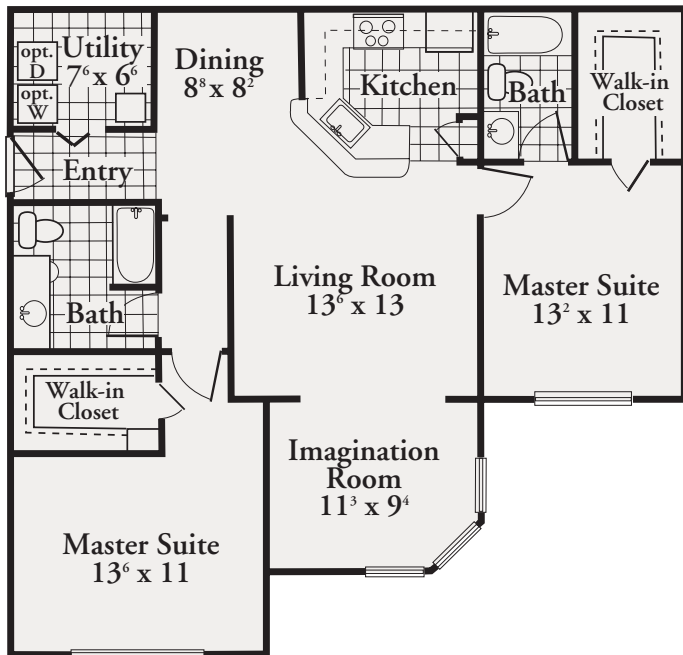
Home Plan A

1 Bedroom – 1 Bath
850 Sq. Ft.



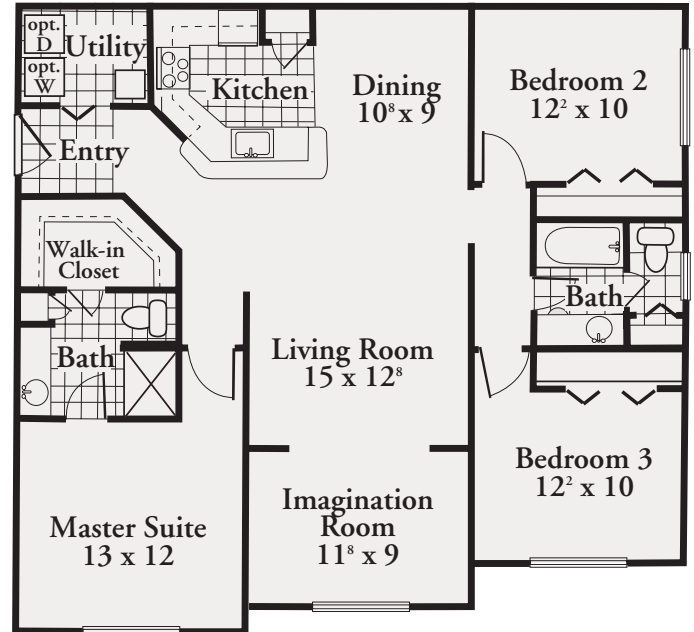
Home Plan B

2 Bedroom – 2 Bath
1120 Sq. Ft.



Home Plan C

2 Bedroom – 2 Bath
1165 Sq. Ft.



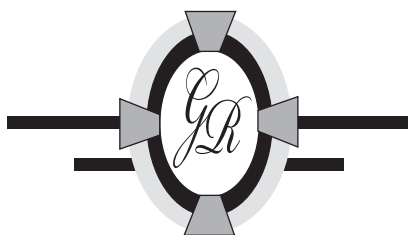
Home Plan D

3 Bedroom – 2 Bath
1390 Sq. Ft.

The Grand Reserve at Maitland Park offers you all the comforts and conveniences in your new home with the benefit of a professional management and maintenance team to provide you with a superior lifestyle.

Your Residence Services

- ◆ *Individual Door-to-Door Refuse Collection*
- ◆ *Full-Time Director of Resident Services*
 - ◆ *Package Acceptance Service*
 - ◆ *Vacation Plant "Sitting" Service*
 - ◆ *Restaurant and Catering Referrals*
 - ◆ *Dry Cleaning Service*
- ◆ *Professionally Managed by Cambridge Management Services, Inc.*
- ◆ *Adult and Children's Activities*
- ◆ *Pool and Community Cable Channel*
- ◆ *Complimentary Notary Service*



THE GRAND RESERVE
AT MAITLAND PARK

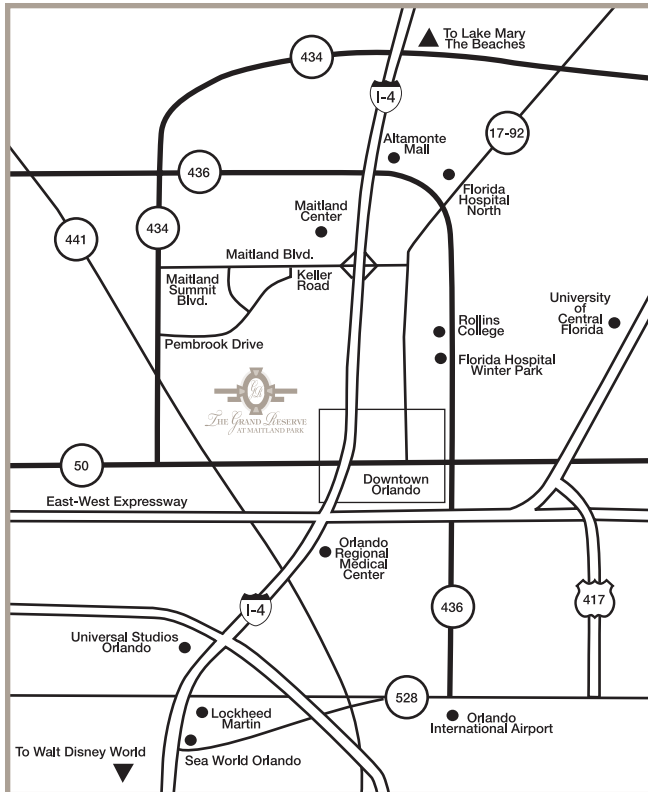
*1939 Grand Isle Circle
Orlando, FL 32810
(407) 660-0663*

Fax (407) 660-2360

Maitland@Cambridge.msi.com

Conveniently located just 1/2 mile south of Maitland Boulevard, nestled in Maitland Park. With easy access to I-4, we're just minutes from Maitland Center, Altamonte Springs, downtown Orlando and many major employers. East coast beaches and Orlando's Major Attractions are just a short drive.

The Location



THE GRAND RESERVE AT MAITLAND PARK

*1939 Grand Isle Circle
Orlando, FL 32810*